



OPERATION GUIDE

DOWNLOAD & CONFIGURATION UTILITY

PDC SERIES

PDC Download and Configuration Utility

Operation Guide

Table of Contents

Login	2
Figure 1: TYSSO PDC Utility: Login	2
Figure 2: Login Error – Communications.....	2
Figure 3: Login Error – Password.....	3
Main Menu.....	3
Download Data to Host	3
Figure 4: TYSSO PDC Utility: Main with Download Data to Host Selected	3
Figure 5: Data Window.....	4
Erase Data in Reader	4
Figure 6: TYSSO PDC Utility: Main with Erase Data in Reader Selected	4
Figure 7: Erase Data Confirmation Window	5
Change Password	5
Figure 8: TYSSO PDC Utility: Main with Change Password Selected	5
Figure 9: TYSSO PDC Utility: Change Password	6
Figure 10: Change Password Confirmation Window	6
Figure 11: Change Password Error Window	6
Enable/Disable Real Time Clock	7
Figure 12: TYSSO PDC Utility: Main with Enable/Disable Real Time Clock Selected.....	7
Figure 13: TYSSO PDC Utility: Enable/Disable RTC with Disable Selected ...	7
Figure 14: Disable RTC Confirmation Window.....	8
Figure 15: TYSSO PDC Utility: Enable/Disable RTC with Enable Selected	8
Figure 16: Enable RTC Confirmation Window.....	9
Set up Power Shutoff Timeout	9
Figure 17: TYSSO PDC Utility: Main with Set up Power Shutoff Timeout Selected.....	9
Figure 18: TYSSO PDC Utility: Auto Shutoff.....	10
Figure 19: Auto Shutoff Error Window.....	10
Figure 20: Auto Shutoff Confirmation Window.....	10
Magstripe Track Configuration	11
Figure 21: TYSSO PDC Utility: Main with Magstripe Track Configuration Selected.....	11
Figure 22: TYSSO PDC Utility: Track Configuration	11
Figure 23: Track Configuration Confirmation Window.....	12

Login

Upon startup of the bundled utility, you will be prompted to log in to the reader. Only if your input password matches what is stored in the reader, will you be able to download captured data to host PC or configure the reader. Note that there is no default password preset at factory. When you access the reader the very first time, simply press the OK button to log in to the reader.

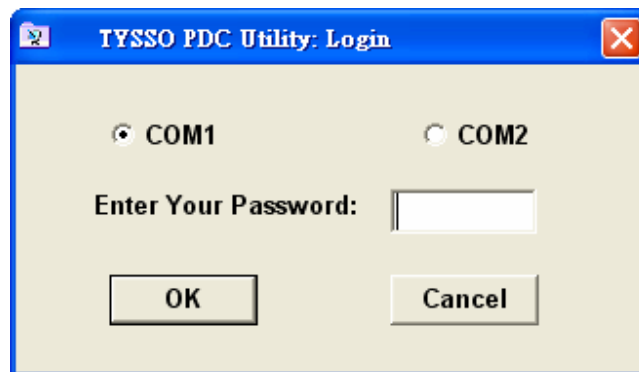


Figure 1: TYSSO PDC Utility: Login

Two possible errors might occur at login. When the communications error window (Figure 2) pops up, check the following:

- Is the reader connected to your PC?
- Is the COM port selection correct?
- Is the reader powered up?
- Is the LED blinking red?



Figure 2: Login Error – Communications

Note that password is case sensitive. Make sure the Caps Lock key is not on when you enter your password.



Figure 3: Login Error – Password

Press the OK button to close the error window. Select the correct COM port and/or reenter a valid password to log in to the reader again.

Main Menu

Upon successful login, you are presented with the main menu containing six (6) items.

Download Data to Host

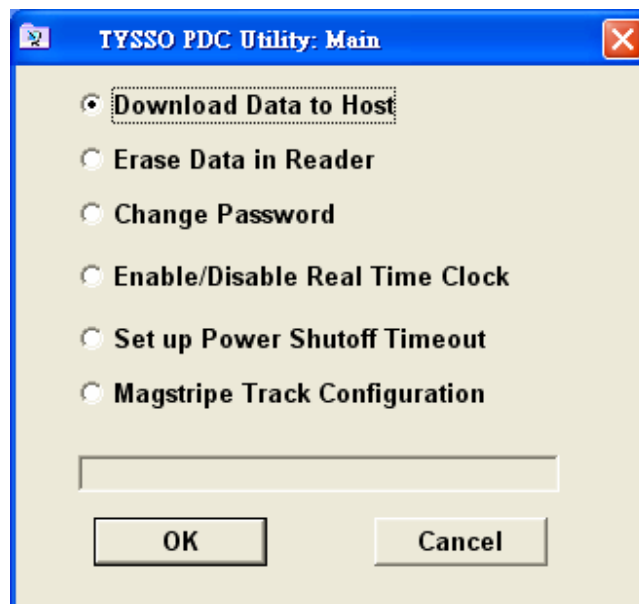


Figure 4: TYSSO PDC Utility: Main with Download Data to Host Selected

When the download operation completes, a data window is brought to the foreground of your screen for review. You may print it out or save it to a file for further processing.

Displayed at the top of the data window is the total number of records received on the host side. Each data record is listed in the order of being stored in the reader.

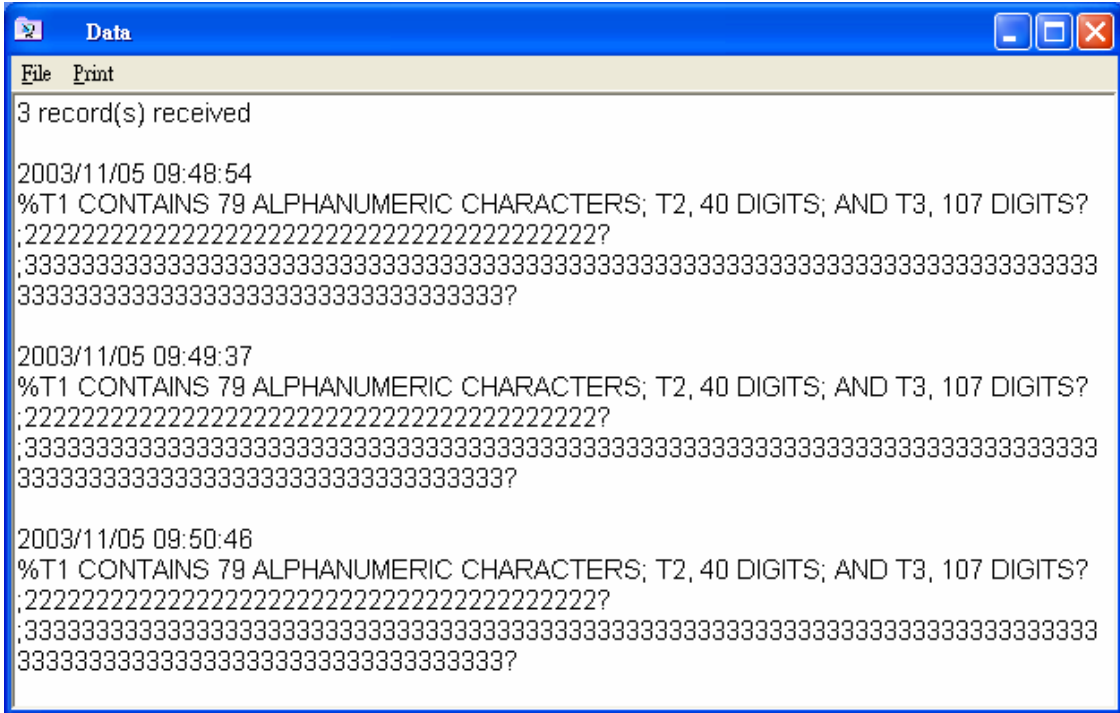


Figure 5: Data Window

Erase Data in Reader

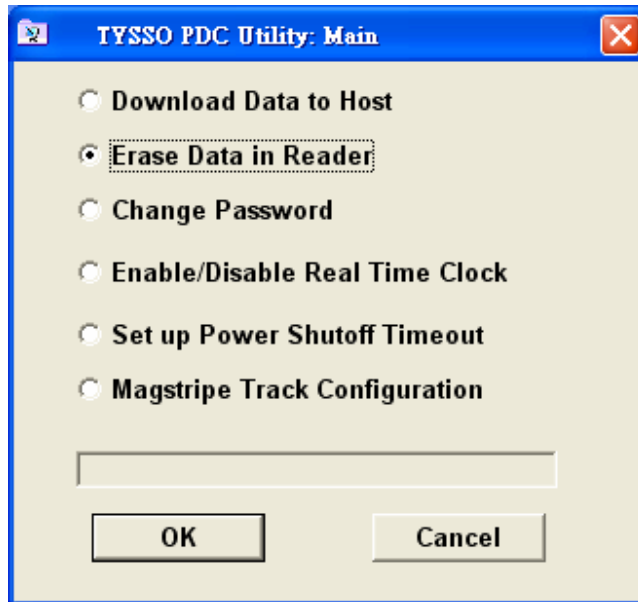


Figure 6: TYSSO PDC Utility: Main with Erase Data in Reader Selected

A confirmation window pops up when all data are successfully removed from the reader. Press the OK button to return to the main menu.



Figure 7: Erase Data Confirmation Window

Change Password

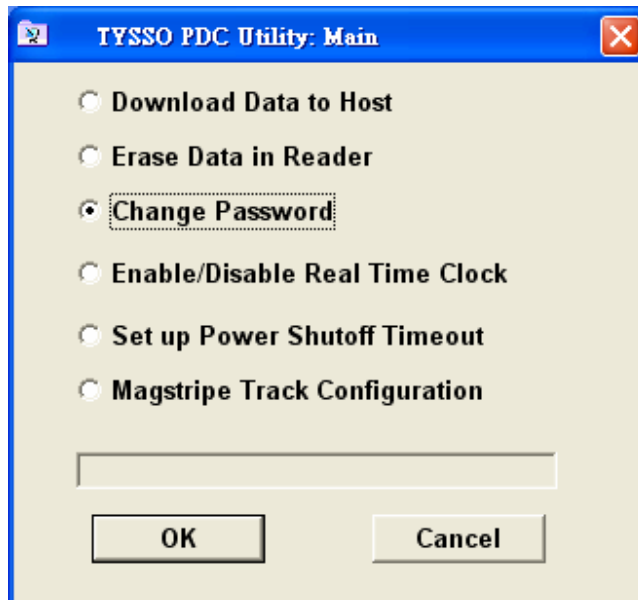


Figure 8: TYSSO PDC Utility: Main with Change Password Selected

The utility allows you to change to a new password only if it successfully verifies your current password. Your password can contain at most 8 alphanumeric characters, including lower-case a ~ z, upper-case A ~ Z, and 0 ~ 9.

Note that there is no default password preset at factory. When you set up your password for the first time, leave out the Current Password field and only fill in the New Password field and the Confirm New Password field.

Write down your password and keep it in a safe place for future reference. If you ever forget your password, you will have to send the reader back to the manufacturer for password reset.

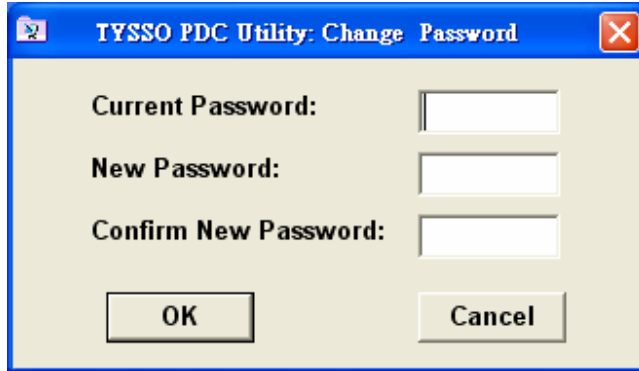


Figure 9: TYSSO PDC Utility: Change Password

A confirmation window pops up when your new password has been successfully stored in the reader. Press the OK button to return to the main menu.



Figure 10: Change Password Confirmation Window

An error window pops up in case the utility fails to verify your current password or the two new passwords you entered do not match. Press the OK button and try again.



Figure 11: Change Password Error Window

Enable/Disable Real Time Clock

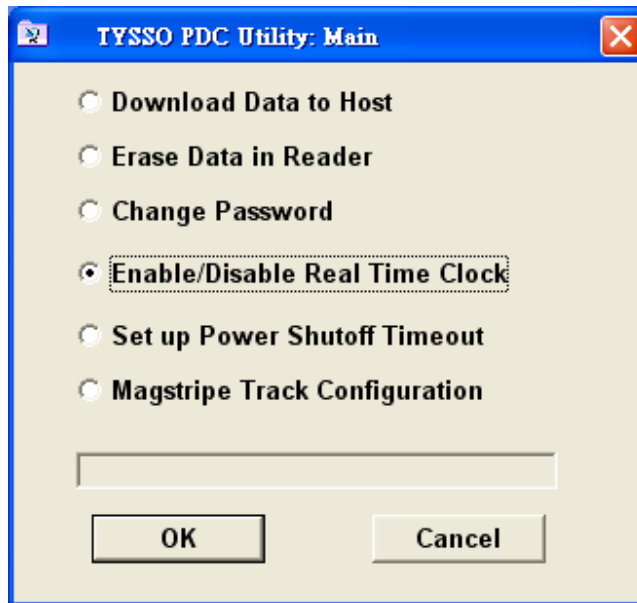


Figure 12: TYSSO PDC Utility: Main with Enable/Disable Real Time Clock Selected

The date and time of a successful swipe are logged in the reader. This menu item allows you to include/exclude the timestamp in the output window of the download operation.

When Disable is selected, each record in the download output window will not be timestamped.

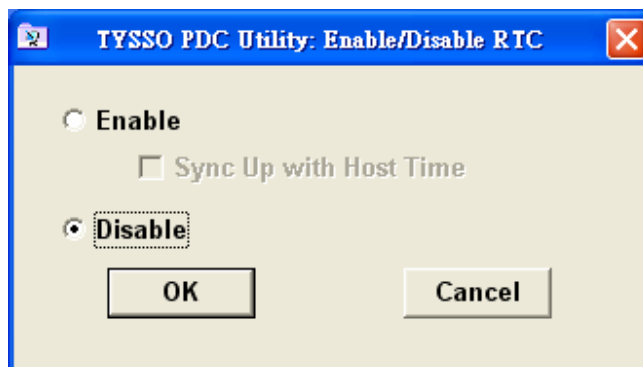


Figure 13: TYSSO PDC Utility: Enable/Disable RTC with Disable Selected

A confirmation window pops up after you press the OK button. Press the OK button again to return to the main menu.



Figure 14: Disable RTC Confirmation Window

When Enable is selected, each record in the download output window will be prefixed with the date and time of the swipe. Note that the real time clock in the reader is not initialized at factory. You do it by checking off the sync-up option when you first enable the RTC. Also note that you need to reinitialize the RTC each time you install a new battery.

PDC utility converts uninitialized timestamp to 2000/01/01 00:00:00.

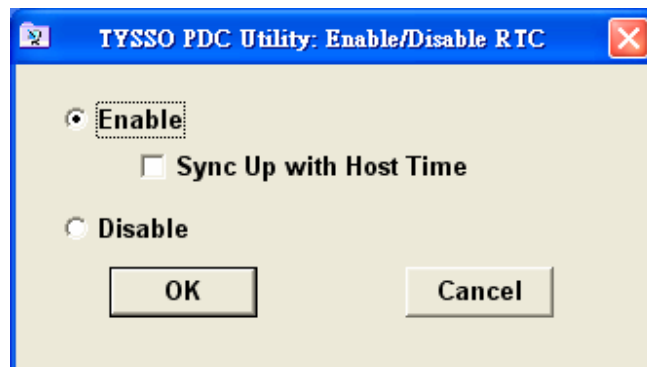


Figure 15: TYSSO PDC Utility: Enable/Disable RTC with Enable Selected

A confirmation window pops up after you press the OK button. Press the OK button again to return to the main menu.



Figure 16: Enable RTC Confirmation Window

When RTC is enabled, a timestamp in the format of year/month/day hour:minute:second (e.g., 2003/08/25 09:37:46) will be appended in front of each data record as illustrated in Figure 5.

Set up Power Shutoff Timeout

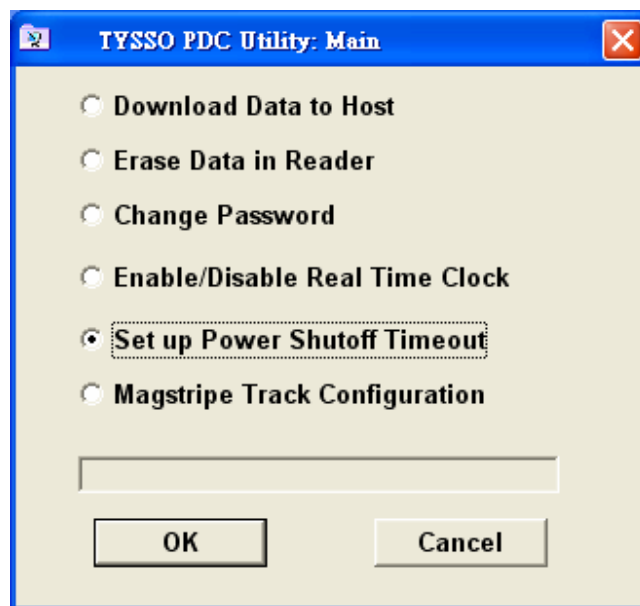


Figure 17: TYSSO PDC Utility: Main with Set up Power Shutoff Timeout Selected

The reader will turn itself into power conservation or sleeping mode after a configurable timeout expires. You can switch the reader back to its active mode anytime by pressing the “wakeup” button. The LED will resume blinking red right after the reader wakes up.

Factory default is 30 seconds. A zero value will keep the reader continuously on until you turn the power switch off.

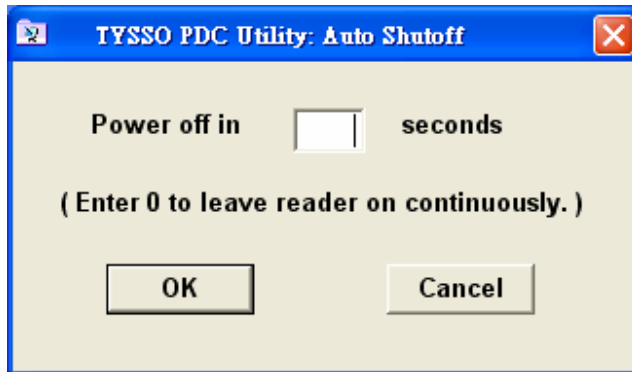


Figure 18: TYSSO PDC Utility: Auto Shutoff

You can set the timeout in between 6 and 300 seconds. Otherwise, the following error window will show up on your screen.

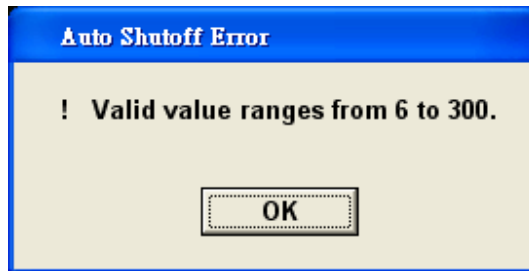


Figure 19: Auto Shutoff Error Window

A confirmation window pops up after you enter a valid number and press the OK button. Press the OK button again to return to the main menu.

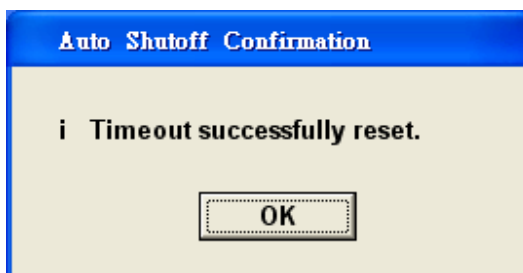


Figure 20: Auto Shutoff Confirmation Window

Magstripe Track Configuration

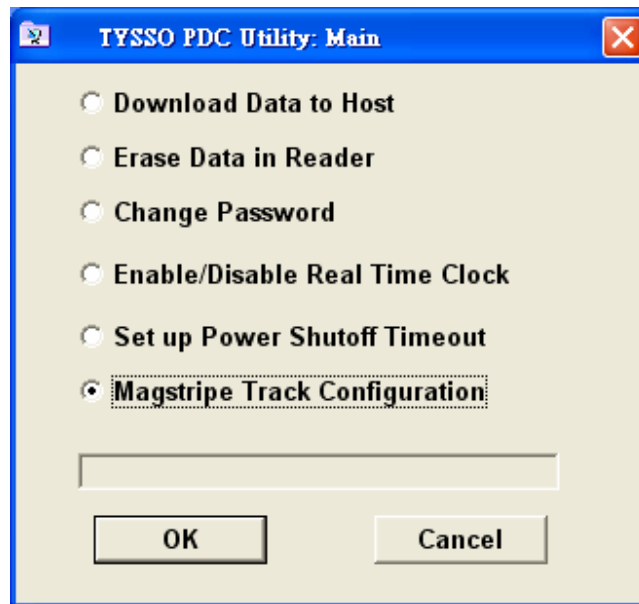


Figure 21: TYSSO PDC Utility: Main with Magstripe Track Configuration Selected

To enforce data integrity, only valid swipes are logged in the reader. You can choose which track(s) to read through the submenu.

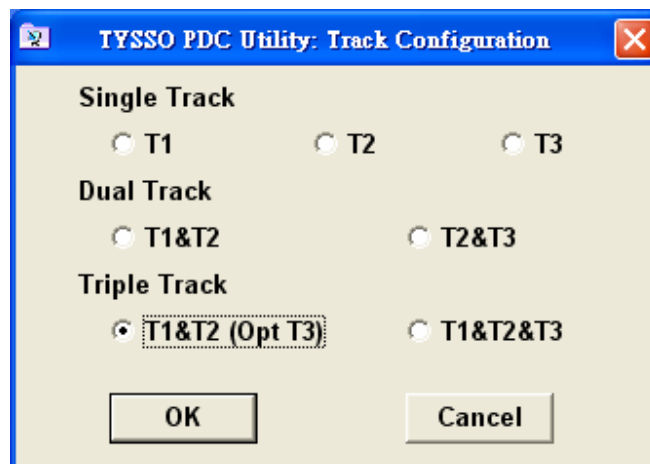


Figure 22: TYSSO PDC Utility: Track Configuration

You can swipe a magstripe card containing more tracks than configured. The reader automatically filters out the unwanted tracks and only stores exactly what you chose. For instance, given that the reader is configured to read T2 only, you can swipe either a T2 only, T1&T2, T2&T3, or T1&T2&T3 card, but not a T1 only or T3 only card.

The factory default setting “*T1&T2 (Opt T3)*” is intended to get most users started right away without going through the track configuration steps. It takes either a T1&T2 or T1&T2&T3 card. In contrast, “*T1&T2*” setting reads a T1&T2&T3 card but discards track 3 data, and “*T1&T2&T3*” setting only accepts a T1&T2&T3 card.

Note that if your application is to read a T1 only, T2 only, T3 only, or T2&T3 card, then you will need to reconfigure the reader accordingly.

A confirmation window pops up after you press the OK button. Press the OK button again to return to the main menu.

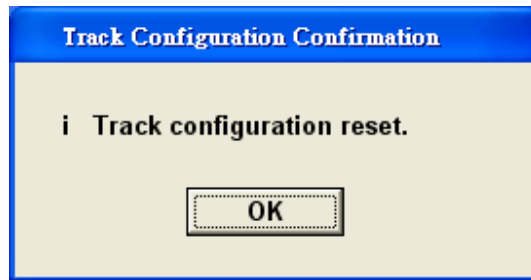


Figure 23: Track Configuration Confirmation Window